

KENTALROOF-A CONFORT 400 T4 0,55kW (27940480AL)

GENERAL DATA



ROOF FAN WITH FOLDING SYSTEM AND ALUMINIUM COWL

MANUFACTURING FEATURES:

- Protection cowl made of anticorrosive treated aluminum easily removable for motor and impeller maintenance thanks to the integrated folding system.
- The design of the cowl with a **rounded shape** is specific to minimize the risk of water ingress due to rain.
- Equipped with a **hinged system** to open the motor-impeller set. This system allows easy maintenance and cleaning of the set without the need to disassemble the entire structure. The opening is possible in 2 inclinations: approximately 45° and 90°, as required by the intervention.
- Structure in anticorrosive galvanized steel and support frame for adaptation to the roof with anti-bird protection grid.
- High-performance, backward-curved blade (reaction) impellers designed to work without scroll. Self-cleaning system, built in galvanized steel treated with anti-corrosion.
- Standard asynchronous squirrel cage motor with IP-55 protection and Class F insulation. Standard voltages 230V 50Hz for single phase motors, 230/400V 50Hz for three phase motors up to 4kW & 400/690V 50Hz for higher powers and 400V 50Hz for 2 speed motors.

APPLICATIONS

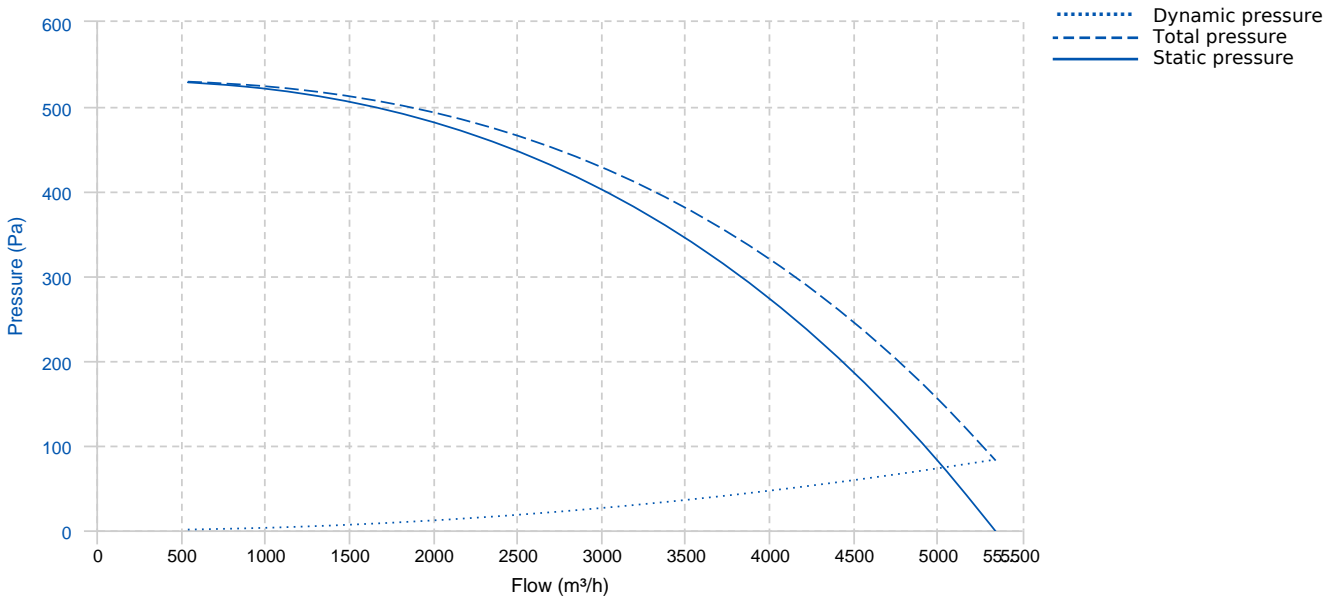
Designed for deck or roof mounting, they are indicated for:

- Smoke extraction.
- Air renewal in all types of buildings and industries.
- Maximum continuous working temperature: transported air 80°C, ambient 60°C to -25°C in three-phase motors.

UNDER REQUEST

- Special voltages.
- Special construction for moving air at 120°C. Serie:

PERFORMANCE CURVE

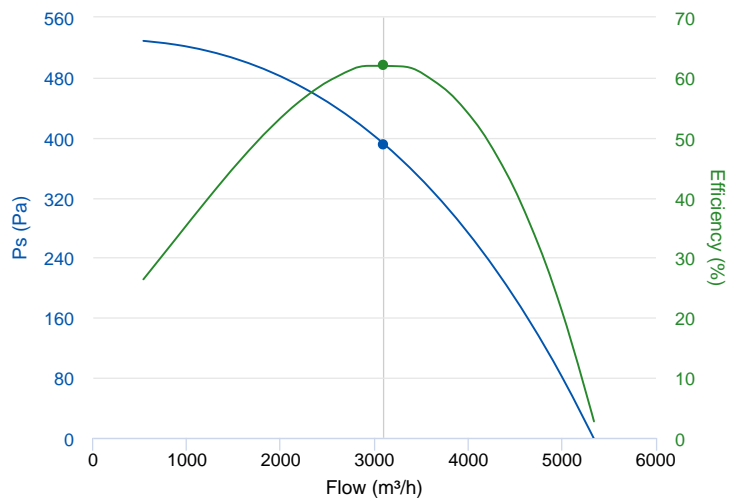


TECHNICAL DATA

Fan							
RPM	1440	Approx. weight	45 kg	Max. Flow	5340 m³/h		
Motor							
Power	0,55 kW	RPM	1440	I max. (230V)	2,57 A	I max. (400V)	1,49 A
Size	80	Approx. weight	9 kg	Efficiency (%)	73.5 %		

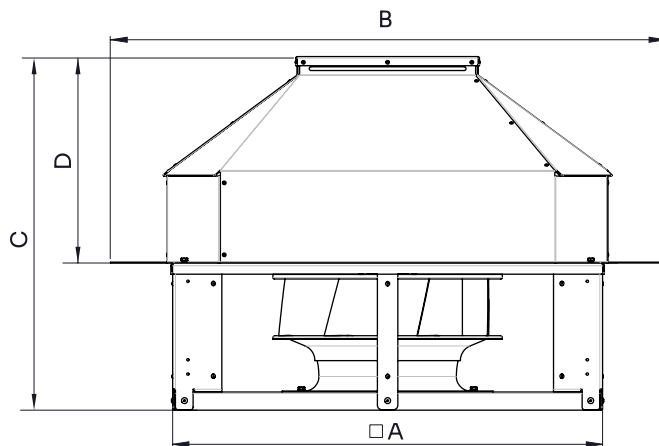
ERP DATA

Fan data sheet		
Fan type	Unit for non-residential ventilation (LOT 6)	
Typology	Unidirectional	
reports.other	None	
Type of driver	None	
Motor power (kW)	0.55	
	Fan values	ERP Requirements 2018
Max. efficiency (%)	62.16	38.49
Effic. Heat recovery (%)	-	
Pabs (kW)	0.568	
Flow (m³/h)	3096.61	
Static pressure (Pa)	391.83	
Speed (m/s)	6.85	



	Fan values	ERP Requirements 2018
SFP (W/m ³ /s)	659.86	

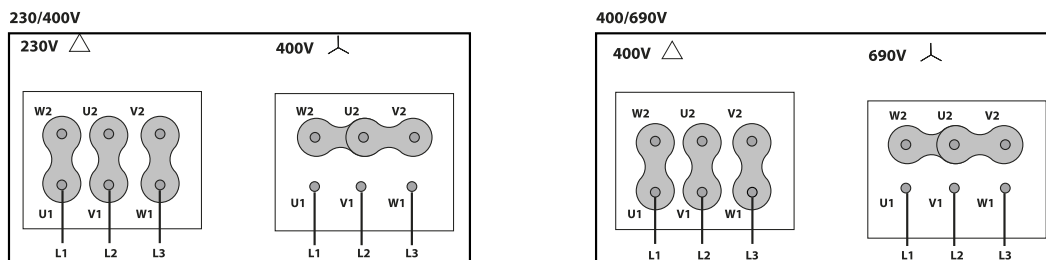
DIMENSIONS



Dimensions (mm)

A (int)	B	C	D
662	860	647.5	365

WIRING DIAGRAM



ACCESSORIES



SAFETY SWITCH
INT 25 3P A
REF: INT253PA



CONNECTION FLANGE
AC 400
REF: 960003212



**CIRCULAR SILENCER
SIL-C 400/400
REF: 960040040**



**CIRCULAR SILENCER
SIL-C 400/800
REF: 960040080**



**CIRCULAR SILENCER
SIL-CN 400/600
REF: 961040060**



**CIRCULAR-CIRCULAR ANTI-VIBRATION FLANGE
BAD 11 (Ø400)
REF: 960003461**



**CIRCULAR SILENCER
SIL-C 400/600
REF: 960040060**



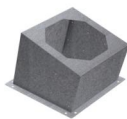
**CIRCULAR SILENCER
SIL-CN 400/400
REF: 961040040**



**CIRCULAR SILENCER
SIL-CN 400/800
REF: 961040080**



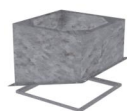
**FREQUENCY SPEED CONTROLLER
SFC 230 I 4,2A *
REF: SFC230I004**



**INCLINED ROOF FAN SUPPORT
BTI 640
REF: A-50870640XX**



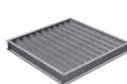
**KENTALROOF VERTICAL DISCHARGE
KV KENTALROOF 400
REF: KVKNTR400**



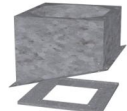
**BTI + AMC MOUNTED
BTI+AMC 640
REF: BTIAMC640XX**



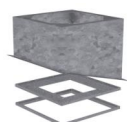
**FREQUENCY SPEED CONTROLLER
SFC 400 III 2,2A *
REF: SFC400III2**



**DEPRESSION DAMPER (HORIZONTAL or
VERTICAL PLACEMENT)
CMP-HUT 500x510
REF: CMPHUT5051**

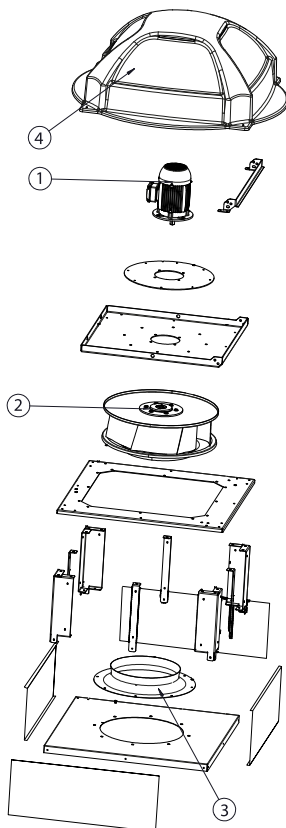


**BTI + ACMP MOUNTED
BTI+ACMP 640
REF: BTIACMP640XX**



**BTI + ACMP+AMC MOUNTED
BTI+ACMP+AMC 640
REF: BTIACMPAMC640XX**

SPARE PARTS



	Code	Model	Qty
1	721001139	MOTOR 0,55kW T4 B5 230/400V	x1
2	R-R63D1L400-19	IMPELLER R63D1L400x112x19 LG	x1
3	R-BAD400PK1	INLET CONE ED11P 400	x1
4	R-279404478A	ROOF COWL KEN. 355-400 (AI)	x1